



INTRODUCTION

公司产品手册 2025

常州市艾居智造科技有限公司

Changzhou iHOME intelligent Manufacturing technology Co.,LTD



WWW.ihomemotion.com



常州市艾居智造科技有限公司

Changzhou iHOME intelligent Manufacturing technology Co.,LTD



艾居智造科技是一家专业研发生产智能家居系统、医疗系统和工业自动化设备的配套制造商。主要产品有电动推杆、功能沙发控制系统、升降办公控制系统以及各种配件等。

iHOME Intelligent Manufacturing Technology is a supporting manufacturer specializing in the development and production of smart home systems, medical systems and industrial automation equipment. The main products include linear actuator, functional sofa control system, electric lift control system and various accessories, etc.

HM-SJ-02-002



- 两按键 (Two button)
- 内置红蓝指示灯 (WoHMinG indicator)
- 控制单电机 (Single-Motor Control)

HM-SJ-04-001



- 四按键 (Four button)
- 数码管显示高度 (Digital tube display height)
- 控制单电机 (Single-Motor Control)



HM-SJ-04-002



- 四按键 (Four button)
- 数码管显示高度 (Digital tube display height)
- 控制单电机 (Single-Motor Control)

HM-SJ-05-003



- 五按键 (Five button)
- 数码管显示高度 (Digital tube display height)
- 控制单电机 (Single-Motor Control)

HM-SJ-05-002



- 五按键 (Five button)
- 数码管显示高度 (Digital tube display height)
- 控制单电机 (Single-Motor Control)

HM-SJ-06-005



- 六按键 (Six button)
- 数码管显示高度 (Digital tube display height)
- 控制单电机 (Single-Motor Control)
- 带C口充电 (Type-C Charging Port)



HM-SJ-06-007



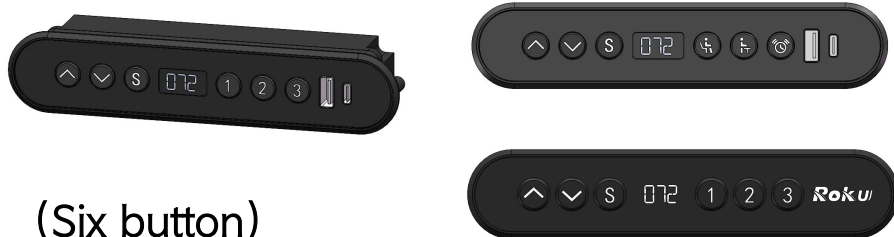
- 六按键 (Six button)
- 数码管显示高度 (Digital tube display height)
- 控制单电机 (Single-Motor Control)

HM-SJ-06-015



- 六按键 (Six button)
- 数码管显示高度 (Digital tube display height)
- 控制单、双电机 (Single and Dual Motor Control)

HM-SJ-06-008



- 六按键 (Six button)
- 带A+C充电口 (USB-C + USB-A Charging)
- 控制单、双电机 (Single and Dual Motor Control)
- 嵌入式安装 (Embedded Installation)

HM-SJ-06-012



- 六按键 (Six button)
- 数码管显示高度 (Digital tube display height)
- 控制单、双、三电机 (Single, Dual, and Triple Motor Control)
- 带C口充电 (Type-C Charging Port)
- 带蓝牙APP控制 (Bluetooth APP Control)



HM-SJ-06-013



- 六按键 (Six button)
- 数码管显示高度 (Digital tube display height)
- 控制单、双、三电机 (Single, Dual, and Triple Motor Control)
- 带USB充电 (Type-A Charging Port)

HM-SJ-06-016



- 六按键 (Six button)
- 数码管显示高度 (Digital tube display height)
- 控制单、双、三电机 (Single, Dual, and Triple Motor Control)
- 带C口充电 (Type-C Charging Port)
- 带蓝牙APP控制 (Bluetooth APP Control)

HM-SJ-06-006



- 六按键 (Six button)
- 数码管显示高度 (Digital tube display height)
- 控制单电机 (Single Motor Control)
- 控制灯条 (Controlled Lighting Strip)

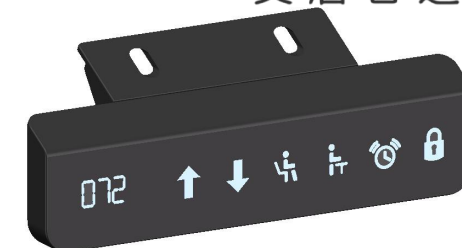


HM-SJ-06-011



- 六按键 (Six button)
- 数码管显示高度 (Digital tube display height)
- 控制单、双电机 (Single and Dual Motor Control)
- 控制灯条 (Controlled Lighting Strip)

HM-SJ-06-018



- 触摸式按键 (Touch Button)
- 数码管显示高度 (Digital tube display height)
- 控制单、双、三电机 (Single, Dual, and Triple Motor Control)

HM-SJ-06-020



- 六按键 (Six button)
- 数码管显示高度 (Digital tube display height)
- 控制单、双电机 (Single and Dual Motor Control)
- 带运行呼吸灯 (LED Breathing Light)

HM-SK-002



- 控制单电机 (For one actuator)
- 表面电镀 (High quality surface plating)
- 工作指示灯 (Working indicator)

HM-SK-003



- 控制单电机 (For one actuator)
- 表面电镀 (High quality surface plating)
- 带USB充电口 (USB-A charging)



HM-SK-004



- 控制单电机 (For one actuator)
- 表面电镀 (High quality surface plating)
- 带USB充电口 (USB-A charging)

HM-SK-005



- 控制单电机 (For one actuator)
- 表面电镀 (High quality surface plating)

HM-SK-006



- 控制双电机 (For two actuators)
- 表面电镀 (High quality surface plating)
- 中位使用 (Middle position in sofa)

HM-SK-023; 039



- 控制单电机 (For one actuator)
- 表面电镀 (High quality surface plating)
- 带USB充电口 (USB-A or C charging)



HM-SK-008



- 控制单电机 (For one actuator)
- 表面电镀 (High quality surface plating)
- 带USB充电口 (USB-A charging)

HM-SK-009



- 控制单电机 (For one actuator)
- 表面电镀 (High quality surface plating)
- 带USB充电口 (USB-A charging)

HM-SK-018; 019



- 控制单、双电机 (Single and Dual Motor Control)
- 手持使用 (Handheld control)



HM-SK-031; 038



- 控制单电机 (For one actuator)
- 手持使用 (Handheld control)



HM-SK-020



艾居智造

- 控制单电机 (For one actuator)
- 手持使用 (Handheld control)
- 带USB充电口 (USB-A charging)

HM-SK-021;022



- 控制双电机 (For two actuators)
- 手持使用 (Handheld control)
- 带USB充电口 (USB-A charging)

HM-SK-024



- 控制双电机 (For two actuators)
- A+C充电 (A+C charging)

HM-SK-036



- 控制单电机 (For one actuators)
- A+C充电 (A+C charging)



HM-SK-034



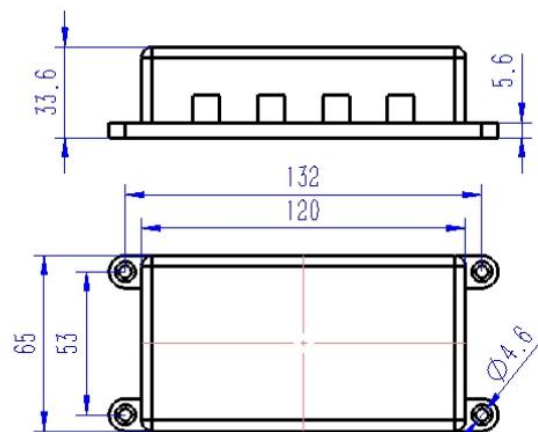
- 控制单电机 (For one actuators)
- A+C充电 (A+C charging)

HM-SK-035



- 控制单电机 (For one actuators)
- A+C充电 (A+C charging)

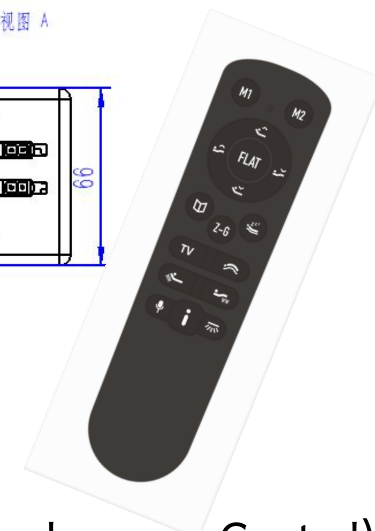
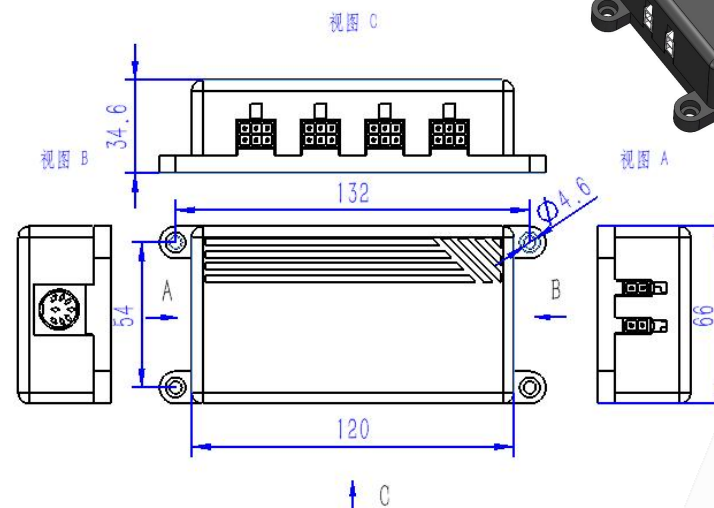
HM-CB-203



- 控制多路电机 (Control Multiple Motors)
- 带无线控制 (Wireless Control System)
- 带语音控制 (For Voice Control)
- 带蓝牙APP控制 (Bluetooth APP Control)



HM-CB-K1



- 霍尔精准控制同步 (Hall Synchronous Control)
- 带无线控制 (Wireless Control System)
- 带语音控制 (For Voice Control)
- 带蓝牙APP控制 (Bluetooth APP Control)

线性驱动器 Linear Actuator

HM-LA10



- Input voltage: DC29V
- Pushing force: 500-2500N
- Speed: 6-55MM/S
- Duty cycle: 10%Max,2mins ON/18mins OFF
- WoH Ming noise: ≤ 50 dB

线性驱动器 Linear Actuator

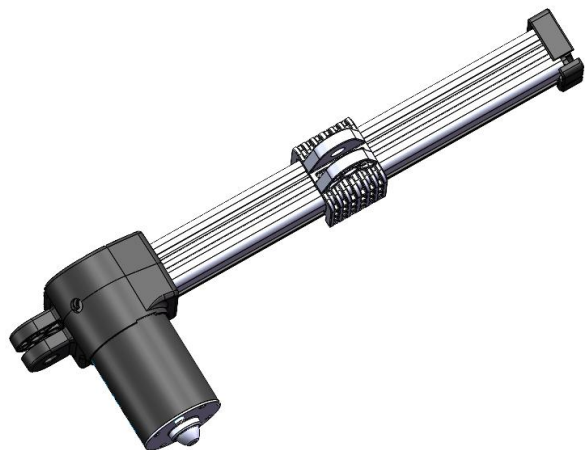
HM-LA20



- Input voltage: DC29V
- Pushing force: 500-2000N
- Speed: 6-30MM/S
- Duty cycle: 10%Max,2mins ON/18mins OFF
- WoH Ming noise: ≤ 50 dB

线性驱动器 Linear Actuator

HM-LA16



- Input voltage: DC29V
- Pushing force: 500-3000N
- Speed: 6-35MM/S
- Duty cycle: 10%Max,2mins ON/18mins OFF
- WoHMin noise: ≤ 50 dB



线性驱动器 Linear Actuator

艾居智造

HM-LA25



- Input voltage: DC29V
- Pushing force: 500-3000N
- Speed: 6-35MM/S
- Duty cycle: 10%Max,2mins ON/18mins OFF
- WoHMin noise: ≤ 50 dB

线性驱动器 Linear Actuator

HM-LA22

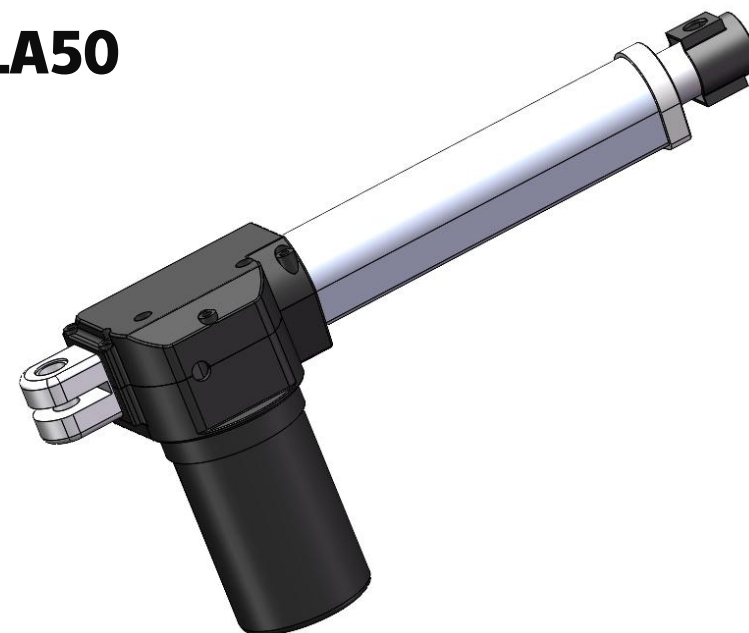


- Input voltage: DC29V
- Pushing force: 500-2500N
- Speed: 6-30MM/S
- Duty cycle: 10%Max,2mins ON/18mins OFF
- WoH Ming noise: ≤ 50 dB



线性驱动器 Linear Actuator

HM-LA50



- Input voltage: DC29V
- Pushing force: 500-6000N
- Speed: 5-30MM/S
- Duty cycle: 10%Max,2mins ON/18mins OFF
- WoH Ming noise: ≤ 50 dB

线性驱动器 Linear Actuator

线性驱动器 Linear Actuator

艾居智造

HM-LA30



HM-LA40



- Input voltage: DC12V-29V
- Pushing force: 300-1000N
- Speed: 5-15MM/S
- Duty cycle: 10%Max,2mins ON/18mins OFF
- WoH Ming noise: $\leq 65\text{dB}$



- Input voltage: DC12-29V
- Pushing force: 800-2500N
- Speed: 6-25MM/S
- Duty cycle: 10%Max,2mins ON/18mins OFF
- WoH Ming noise: $\leq 50\text{dB}$

线性驱动器 Linear Actuator

HM-LA31



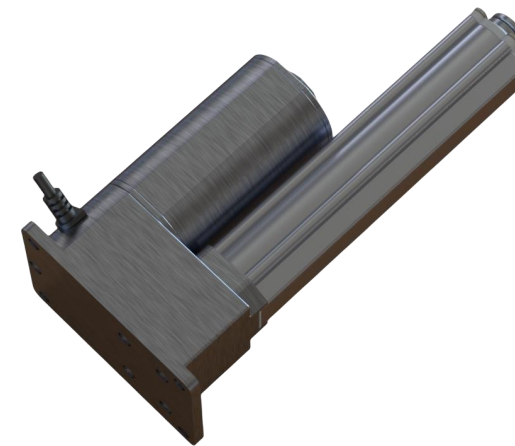
- Input voltage: DC12V-29V
- Pushing force: 300-1000N
- Speed: 5-15MM/S
- Duty cycle: 10%Max,2mins ON/18mins OFF
- WoHMin noise: ≤ 65 dB

线性驱动器 Linear Actuator

HM-LA42



- Input voltage: DC12-29V
- Pushing force: 800-2500N
- Speed: 6-25MM/S
- Duty cycle: 10%Max,2mins ON/18mins OFF
- WoHMin noise: ≤ 50 dB



无线充电器 Wireless Charger

ZXP0013



在台面开直径60mm的圆孔，把无线充电按下即可

ZXP0036



ZXP0028三线圈款无线充



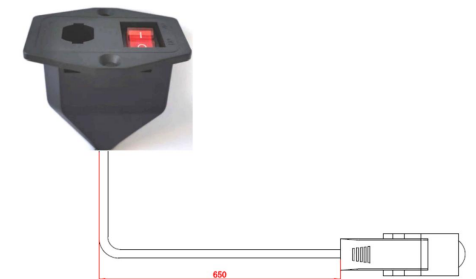
HM-CJ01充电插座 A+C口



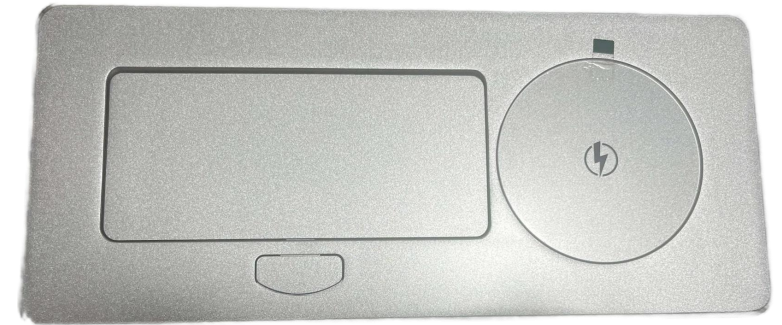
转换接口



HM-CZ01



电源适配器 Power Charger





艾居智造

伟千夫诺诺，

唯九孜不倦。



了解更多

13813561775

常州市艾居智造科技有限公司

Changzhou iHOME intelligent Manufacturing Technology Co.,LTD

公司地址：江苏省常州市武进区湖塘科技产业园

Address: Hutang Technology Industrial Area, Wujin District,
Changzhou City, Jiangsu Province, P.R.C

